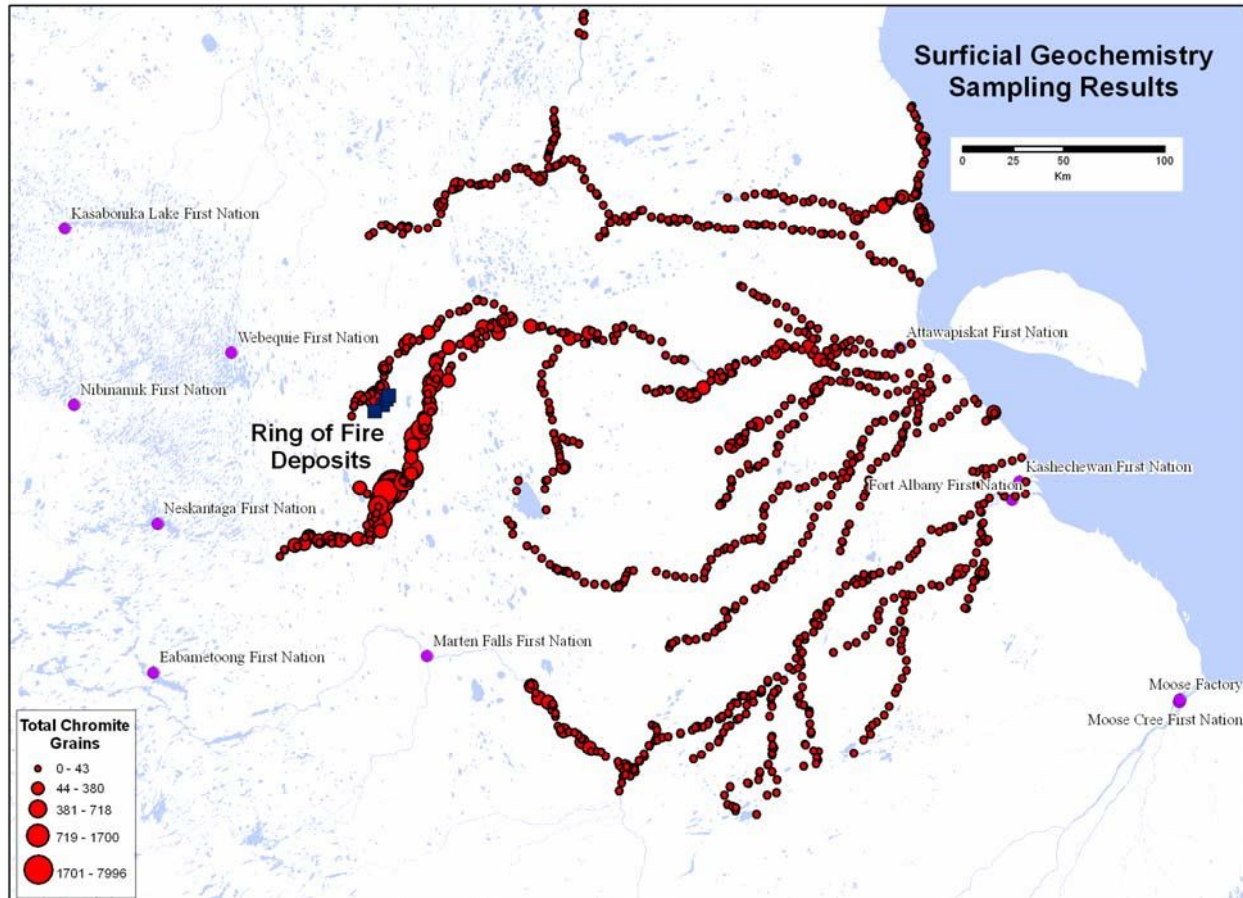


Mineral Exploration – Ring of Fire

Ontario Ministry of Northern Development, Mines and Forestry
(MNDMF)

Ontario Geological Survey



Ontario Geological Survey samples collected from rivers in 2004 identified grains of the mineral chromite (red dots) that pointed to the “Ring of Fire” chromite discovered in 2008 (blue squares).

Since 2007, private sector invested approximately \$120 million in mineral exploration in this region, creating jobs and other economic activity for Aboriginal and non-Aboriginal people across Ontario.

This geological survey informs Far North land-use planning and contributes to efficiency of mineral exploration.

Mineral Exploration – Ring of Fire
Ministry of Northern Development, Mines and Forestry
Ontario Geological Survey

Results:

- OGS 2004 survey identified the area of the subsequent “Ring of Fire” chromite discovery, Marten Falls - Webequie area;
- Attracted mineral exploration investment of approximately \$120 million in the region between 2007 and 2010;
- Jobs and other economic activity created in Aboriginal and non-Aboriginal communities across Ontario;
- One of Ontario’s most significant mineral development projects in the last century.

Policy Relevance:

- Strong economy
- Far North Land Use Planning
- Strong relationships with Aboriginal people
- Economic development options for Aboriginal and Ontario communities.

Public-Industry Relevance:

- Changed the perception of Ontario’s Far North mineral potential;
- Attracted mineral exploration investment to the region (approximately \$120 million since 2007);
- Influenced industry, First Nation, government land-use planning and economic development planning considerations;
- Reinforces the value of working with First Nations.

Technical Method:

Stream sediment (river bottom materials) samples collected by local Aboriginal people under contract to MNDMF’s Ontario Geological Survey.

Next Steps:

- Continue the application of this type of geological survey across the Far North.
- Create geological information for the Ring of Fire area and the Far North.
- Further geoscience collaboration with Natural Resources Canada’s Geological Survey of Canada (GEM Project) and local Aboriginal communities.

Technical Contact:

Ross Kelly, Ontario Geological Survey, Ministry of Northern Development, Mines and Forestry;
Tel: 705-670-5908

Ring of Fire Contact:

Christine Kaszycki, Assistant Deputy Minister, Ring of Fire Secretariat, Ontario Ministry of Northern Development, Mines and Forestry; Tel: 705-670-5877

OGS Director:

Andy Fyon, Director, Ontario Geological Survey, Ministry of Northern Development, Mines and Forestry; Tel: 705-670-5924