

## Government Till Geochemical Survey Leads to Discovery of Gold Deposit in West-Central New Brunswick

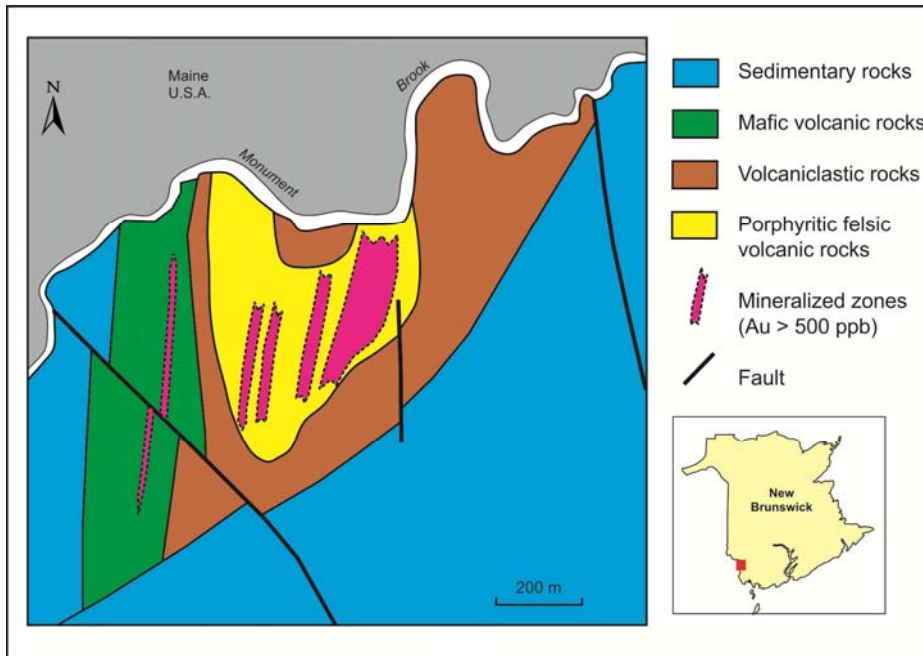
A prospector staked some claims in west-central New Brunswick along Monument Brook on the Canada-United States border in 1994 following the release a regional till geochemical survey published by the Geological Survey Branch of the New Brunswick Department of Natural Resources (Open File Report 93-7). Chemical analyses of till samples collected in this area by the Geological Surveys Branch in 1992 yielded results ranging from 17 to 94 parts per billion (ppb) gold when values as low as 10 ppb would be considered anomalous. Prospecting on nearby Poplar Mountain, the prospector collected rock samples that ran up to 8.59 g/t gold. Freewest Resources Canada Inc. optioned the Poplar Mountain claims in 1995 and in a 1999 drilling program encountered gold values averaging 2.5 g/t over 13.4 m. Further drilling over the next ten years has defined a relatively high tonnage, low grade gold deposit. The gold mineralization occurs as a stockwork in a subvolcanic dome of Ordovician age.

### **DESCRIPTION OF GEOSCIENCE PROJECT:**

- The Geological Surveys Branch of the New Brunswick Department of Natural Resources has been carrying out an ongoing regional till geochemical program (sampling on a standard 2 km grid) in New Brunswick since 1985.
- Analytical results and field observations are used to build a provincial database for mineral exploration and environmental applications.
- Elements analyzed in till samples using standard trace-element geochemistry packages include Ag, As, Au, Ba, Br, Ca, Cd, Ce, Co, Cr, Cs, Cu, Eu, Fe, Hf, Hg, La, Lu, Mn, Mo, Na, Nd, Ni, Pb, Rb, Sb, Sc, Sm, Sn, Ta, Tb, Th, U, W, Yb, and Zn.
- A total of 32 open file reports have been published by the New Brunswick Geological Surveys Branch covering regional till sampling (on a 2 km grid) in New Brunswick. A further 5 open file reports have been published on detailed sampling around deposits.

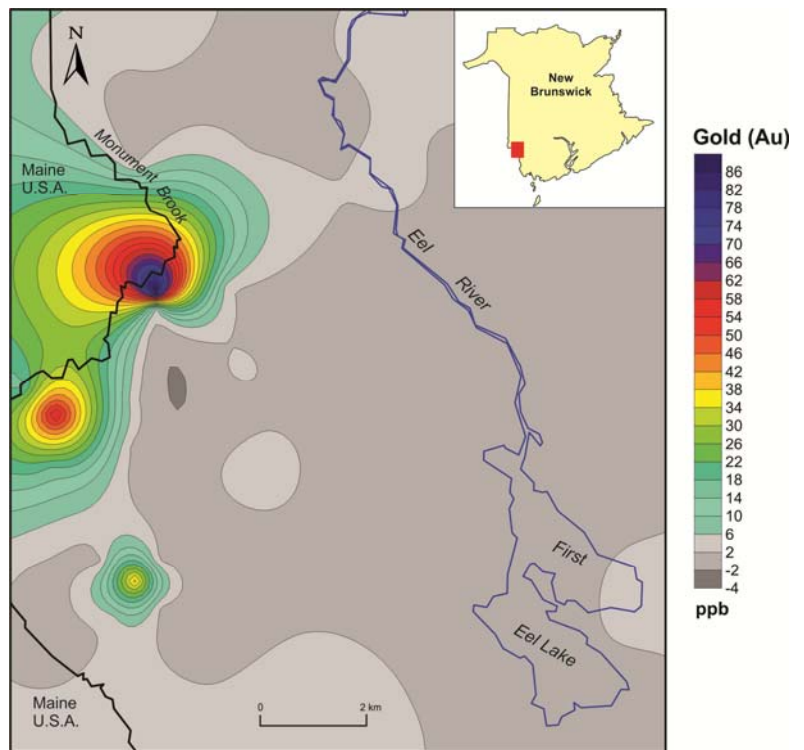
### **MEASUREMENT OF SUCCESS:**

- Between 1997 and 2010, approximately \$4 million has been spent carrying out exploration work on the Poplar Mountain property.
- Inferred Mineral Resources at Poplar Mountain, using a cut-off grade of 0.35 g/t, are currently estimated as 11,640,000 tonnes grading 0.96 g/t gold.



Bedrock geology of the Poplar Mountain area.

Contour map of gold in tills.



Prepared by Les Fyffe, Director, Geological Surveys Branch,  
New Brunswick Department of Natural Resources.